



Post bases

10920.1600

Innovative wood connection systems for highest requirements.



PIST Metallbau GmbH & Co. KG
DIN EN 1090-2



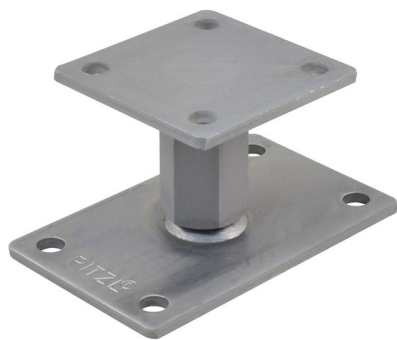
ZiNiP
max protection



Post bases Right / left threaded

PTP easy post base 10920.1600

A system for all applications! Threads of 20 to 30 mm and the most varied plate sizes with 6 to 15 mm material thickness - we have the perfect solution for any application. Lift-off and lateral impacts can be counteracted with a straight screw connection into the cross-grained wood using fully-threaded 10 x 120 mm wood screws (with European Technical Approval) or a strut or lateral latches. Of course, post bases of the right/left-threaded system are still height-adjustable when mounted and under heavy load. The use of additional lock nuts increases the rigidity of the connection.



Upper plate mm	100 x 100 x 6
Lower plate mm	160 x 100 x 6
Thread, M24 low.	35
Thread, M24 upp.	35
Borehole Ø 13 mm bottom	4
Borehole Ø 12 mm top	4
Installation height mm	82 - 92
Special features	short version
Suitable cover sleeve item no. 10834.____	.1060



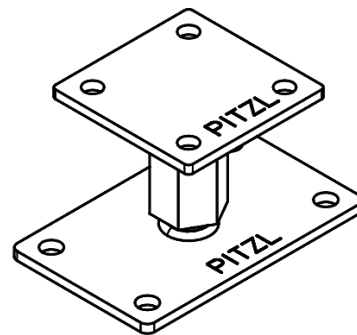
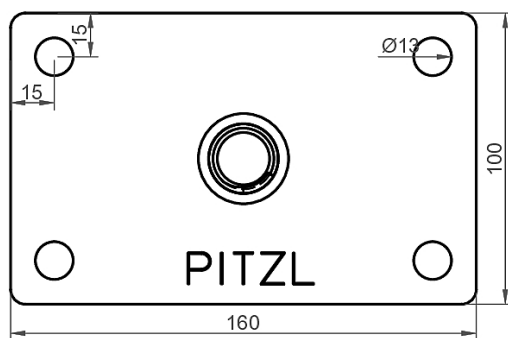
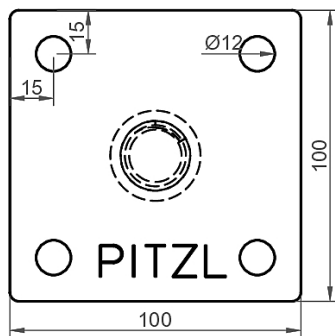
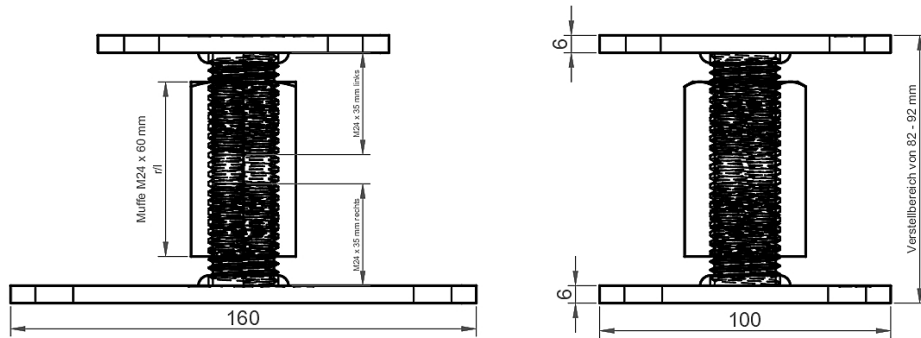
Pitzl Metallbau GmbH & Co.KG
Siemensstraße 26
D - 84051 Altheim

Phone: +49 8703 9346-0
Fax: +49 8703 9346-55
E-mail: info@pitzl-connectors.com

Product information and
terms and conditions at
www.pitzl-connectors.com

Post bases Right / left threaded

PTP easy post base 10920.1600



Pitzl Metallbau GmbH & Co.KG
Siemensstraße 26
D - 84051 Altheim

Phone: +49 8703 9346-0
Fax: +49 8703 9346-55
E-mail: info@pitzl-connectors.com

Product information and
terms and conditions at
www.pitzl-connectors.com

Post bases Right / left threaded

PTP easy post base 10920.1600

This product is currently not in the approval. Therefore, there are no static value.

Accessories

Item no.	Description
99210.1012	Washer-head screw 10 x 120 mm
10834.1060	Cover sleeve for thread M24 Adjustment range: 60 - 105 mm



Pitzl Metallbau GmbH & Co.KG
Siemensstraße 26
D - 84051 Altheim

Phone: +49 8703 9346-0
Fax: +49 8703 9346-55
E-mail: info@pitzl-connectors.com

Product information and
terms and conditions at
www.pitzl-connectors.com