



# Post bases

## 90000.4001

Innovative wood connection systems for highest requirements.



PIST Metallbau GmbH & Co. KG  
DIN EN 1090-2



ZiNiP  
max protection



## Post bases Accessories for post bases

# 5-hole plate 90000.4001

5-hole plate with welded nut for thread M24



Plate M 24 mm	100 x 100 x 6
---------------	---------------

Note	Welded with nut
------	-----------------

Boreholes Ø 12 mm	4
-------------------	---



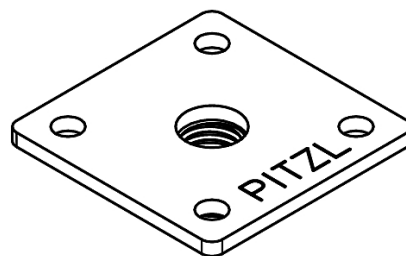
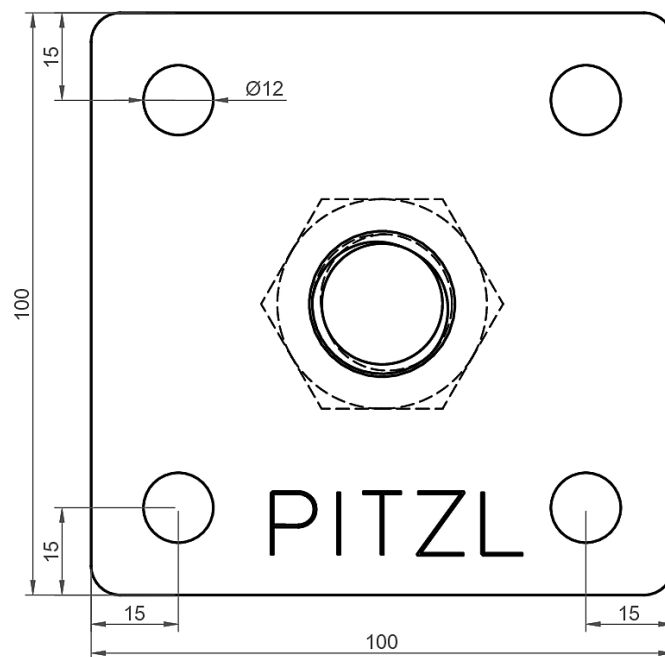
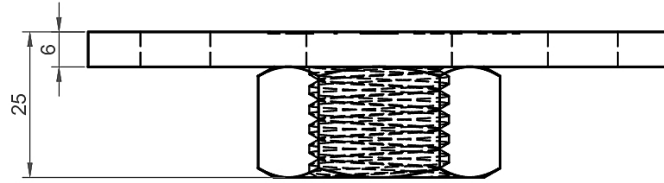
Pitzl Metallbau GmbH & Co.KG  
Siemensstraße 26  
D - 84051 Altheim

Phone: +49 8703 9346-0  
Fax: +49 8703 9346-55  
E-mail: [info@pitzl-connectors.com](mailto:info@pitzl-connectors.com)

Product information and  
terms and conditions at  
[www.pitzl-connectors.com](http://www.pitzl-connectors.com)

## Post bases Accessories for post bases

# 5-hole plate 90000.4001



Pitzl Metallbau GmbH & Co.KG  
Siemensstraße 26  
D - 84051 Altheim

Phone: +49 8703 9346-0  
Fax: +49 8703 9346-55  
E-mail: [info@pitzl-connectors.com](mailto:info@pitzl-connectors.com)

Product information and  
terms and conditions at  
[www.pitzl-connectors.com](http://www.pitzl-connectors.com)

## Post bases Accessories for post bases

# 5-hole plate 90000.4001

This product is currently not in the approval. Therefore, there are no static value.



Pitzl Metallbau GmbH & Co.KG  
Siemensstraße 26  
D - 84051 Altheim

Phone: +49 8703 9346-0  
Fax: +49 8703 9346-55  
E-mail: [info@pitzl-connectors.com](mailto:info@pitzl-connectors.com)

Product information and  
terms and conditions at  
[www.pitzl-connectors.com](http://www.pitzl-connectors.com)