

# Connectors

## 88560.1000

Innovative wood connection systems for highest requirements.



## Connectors Heavy-duty HVP

# HVP connector 88560.1000

The heavy-duty HVP of the series 885 with a width of 140 mm are optimally suitable for wide beams (from 170 mm) under very high loads.

A further quality criterion of the Pitzl HVP connectors series is the anodisation. Beside a smooth-running assembly and a dirty-free surface it provides the Pitzl HVP a very beautiful look.



Dimensions w x h x d (mm)	140 x 600 x 20
Number of screws	64
Screws size	Ø 8 x 100 - 200
Minimal timber section with screws Ø 8 x 160 (mm) Header	170 x 620
Joist	170 x 620
Characteristic load capacity* Ø 8 x 160	352,01
Ø 8 x 200	435,47
Packing unit	4
CE	*

\* F2,Rk (kN) for GL24h with fully threaded screws: Ø 8 x 160 with effective thread length of 150 mm and Ø 8 x 200 with effective thread length of 190 mm. For other screws and thread lengths or wood based materials: cf. design manual. Screws up to 200 mm length und the expanded heavy-duty series 885.. enable a high augmentation of the load capacity.



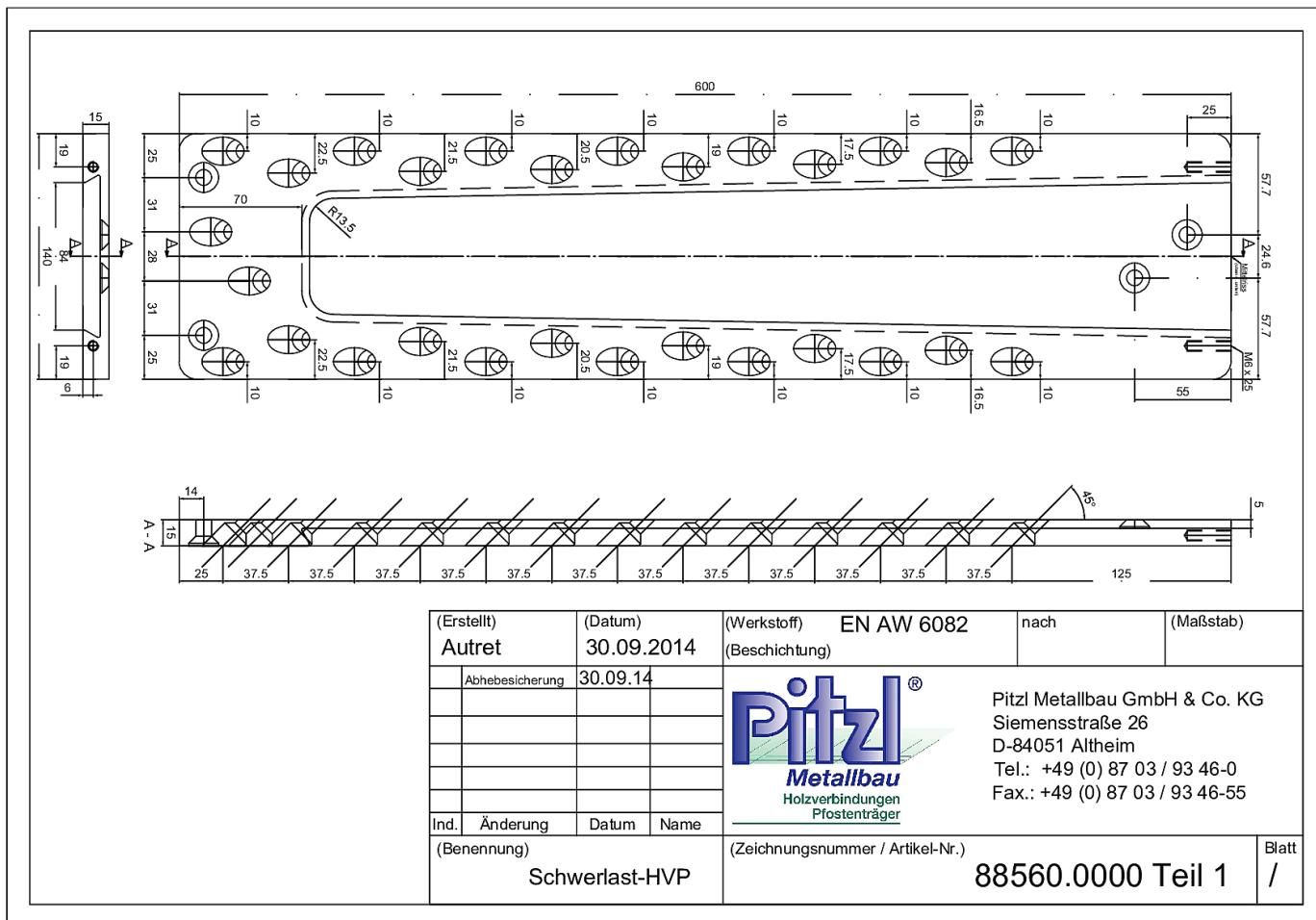
Pitzl Metallbau GmbH & Co.KG  
Siemensstraße 26  
D - 84051 Altheim

Phone: +49 8703 9346-0  
Fax: +49 8703 9346-55  
E-mail: [info@pitzl-connectors.com](mailto:info@pitzl-connectors.com)

Product information and  
terms and conditions at  
[www.pitzl-connectors.com](http://www.pitzl-connectors.com)

# Connectors Heavy-duty HVP

## HVP connector 88560.1000



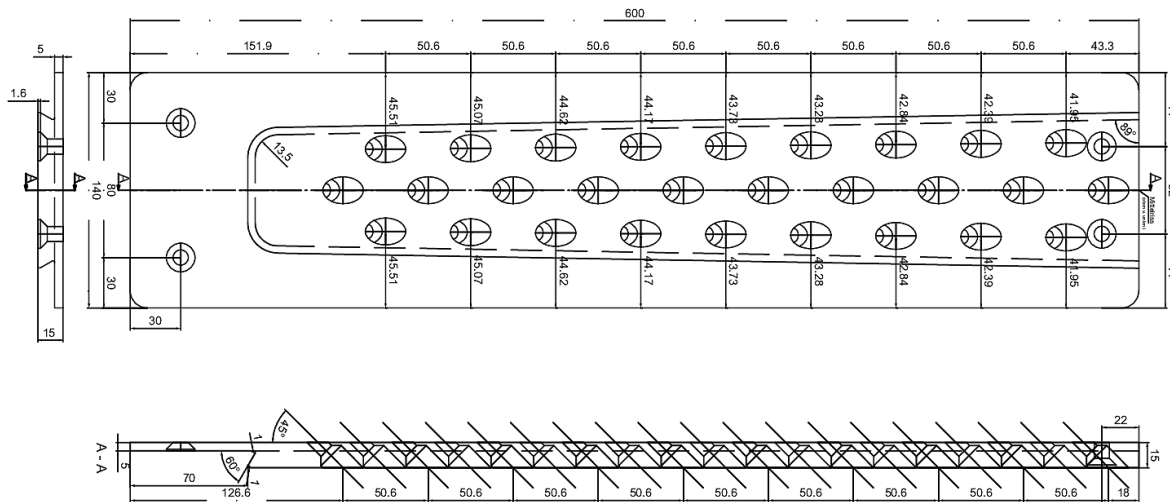
Pitzl Metallbau GmbH & Co.KG  
Siemensstraße 26  
D - 84051 Altheim


Phone: +49 8703 9346-0  
Fax: +49 8703 9346-55  
E-mail: info@pitzl-connectors.com

Product information and  
terms and conditions at  
www.pitzl-connectors.com

# Connectors Heavy-duty HVP

## HVP connector 88560.1000



(Erstellt) <b>Autret</b>	(Datum) <b>03.06.2014</b>	(Werkstoff) <b>EN AW 6082</b>	nach	(Maßstab)	
		(Beschichtung)			
		 <p><b>Pitzl</b><sup>®</sup> <b>Metallbau</b> Holzverbindungen Pfostenträger</p>	Pitzl Metallbau GmbH & Co. KG Siemensstraße 26 D-84051 Altheim Tel.: +49 (0) 87 03 / 93 46-0 Fax.: +49 (0) 87 03 / 93 46-55		
Ind.	Änderung		Datum	Name	
(Benennung) <b>HVP-Schwerlast</b>				(Zeichnungsnummer / Artikel-Nr.) <b>88560.0000 Teil 2</b>	
				Blatt <b>/</b>	



Pitzl Metallbau GmbH & Co.KG  
Siemensstraße 26  
D - 84051 Altheim

Phone: +49 8703 9346-0  
Fax: +49 8703 9346-55  
E-mail: info@pitzl-connectors.com

Product information and  
terms and conditions at  
www.pitzl-connectors.com

## Connectors Heavy-duty HVP

# HVP connector 88560.1000

### Static values

Effective thread length ( $l_{ef}$ )		Minimal section (mm)		Characteristic load capacity $R_k$ (kN)							
				Solid wood C24 ( $\rho_k = 350 \text{ kg/m}^3$ )				Glued-laminated timber GL24h ( $\rho_k = 385 \text{ kg/m}^3$ )			
Screws	$l_{ef}$ (mm)	H	J	$F_{2,Rk}$	$F_{3,Rk}$	$F_{4,Rk}$	$F_{1,Rk}$	$F_{2,Rk}$	$F_{3,Rk}$	$F_{4,Rk}$	$F_{1,Rk}$
$\emptyset 8,0 \times 160$	150	170 x 620	170 x 620	326,17	36,40	103,27	48,32	348,35	36,40	107,60	51,61
$\emptyset 8,0 \times 180$	170	190 x 650	170 x 650	365,06			54,09	389,89			57,76
$\emptyset 8,0 \times 200$	190	210 x 680	170 x 680	403,50			59,78	430,94			63,85

Further static values can be found in our design manual at [www.pitzl-connectors.com/en/downloads](http://www.pitzl-connectors.com/en/downloads)

### Accessories

Item no.	Description
99211.0812	Countersunk screw 8 x 120 mm
99211.0818	Countersunk screw 8 x 180 mm
99211.0820	Countersunk screw 8 x 200 mm
58396.0000	Collet holder
58396.0012	Collet $\emptyset 12 \text{ mm}$
50934.2000	Grooving cutter $\emptyset 20 \text{ mm}$



Pitzl Metallbau GmbH & Co.KG  
Siemensstraße 26  
D - 84051 Altheim

Phone: +49 8703 9346-0  
Fax: +49 8703 9346-55  
E-mail: [info@pitzl-connectors.com](mailto:info@pitzl-connectors.com)

Product information and  
terms and conditions at  
[www.pitzl-connectors.com](http://www.pitzl-connectors.com)