

Connectors

88550.1000

Innovative wood connection systems for highest requirements.



PIST Metallbau GmbH & Co. KG
DIN EN 1090-2



ZiNiP max protection



Connectors Heavy-duty HVP

HVP connector 88550.1000

The heavy-duty HVP of the series 885 with a width of 140 mm are optimally suitable for wide beams (from 170 mm) under very high loads.

A further quality criterion of the Pitzl HVP connectors series is the anodisation. Beside a smooth-running assembly and a dirty-free surface it provides the Pitzl HVP a very beautiful look.



Dimensions w x h x d (mm)	140 x 500 x 20
Number of screws	52
Screws size	Ø 8 x 100 - 200
Minimal timber section with screws Ø 8 x 160 (mm) Header	170 x 520
Joist	170 x 520
Characteristic load capacity* Ø 8 x 160	276,58
Ø 8 x 200	342,15
Packing unit	4
CE	*

* F_{2,Rk} (kN) for GL24h with fully threaded screws: Ø 8 x 160 with effective thread length of 150 mm and Ø 8 x 200 with effective thread length of 190 mm. For other screws and thread lengths or wood based materials: cf. design manual. Screws up to 200 mm length und the expanded heavy-duty series 885.. enable a high augmentation of the load capacity.



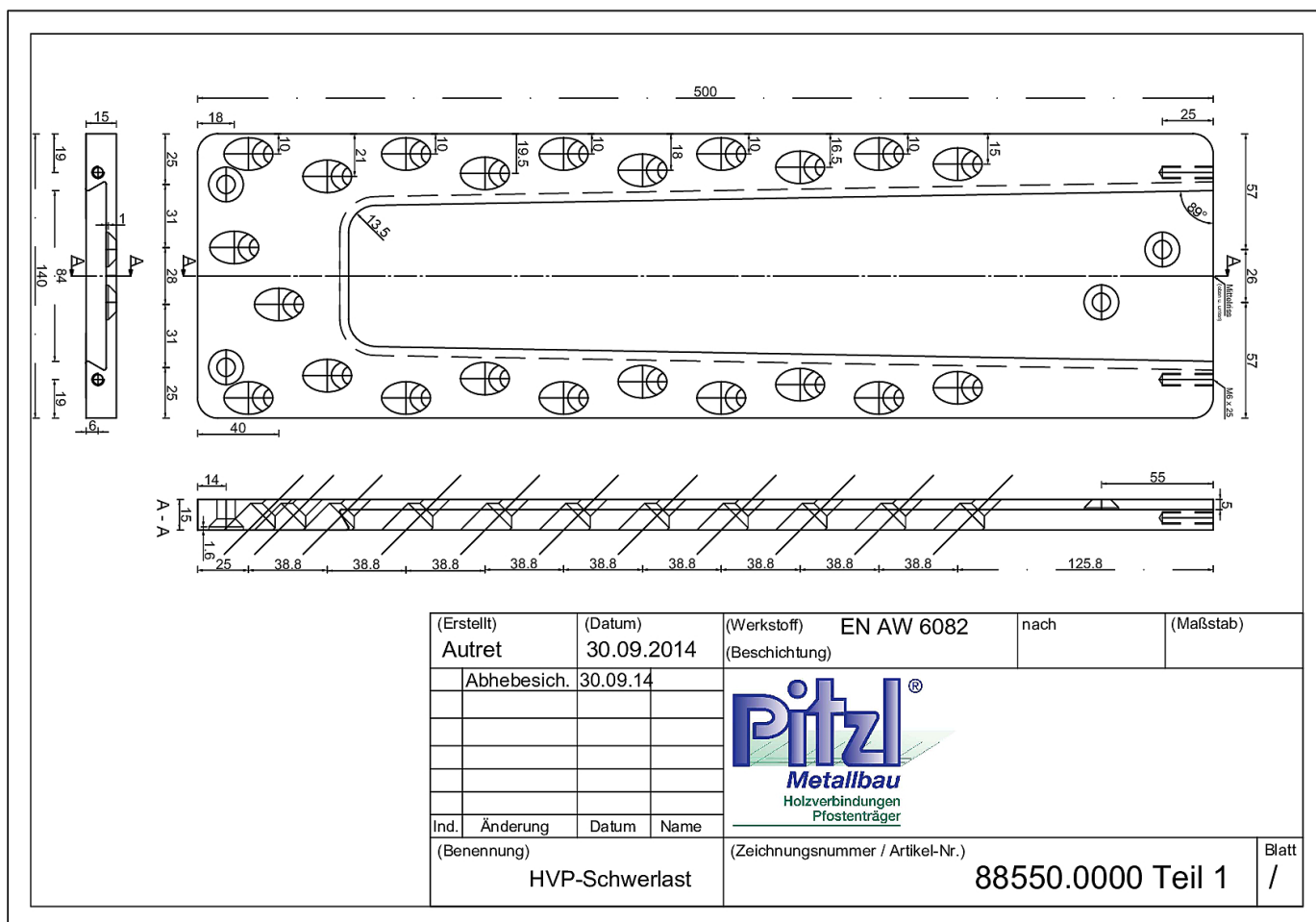
Pitzl Metallbau GmbH & Co.KG
Siemensstraße 26
D - 84051 Altheim

Phone: +49 8703 9346-0
Fax: +49 8703 9346-55
E-mail: info@pitzl-connectors.com

Product information and
terms and conditions at
www.pitzl-connectors.com

Connectors Heavy-duty HVP

HVP connector 88550.1000



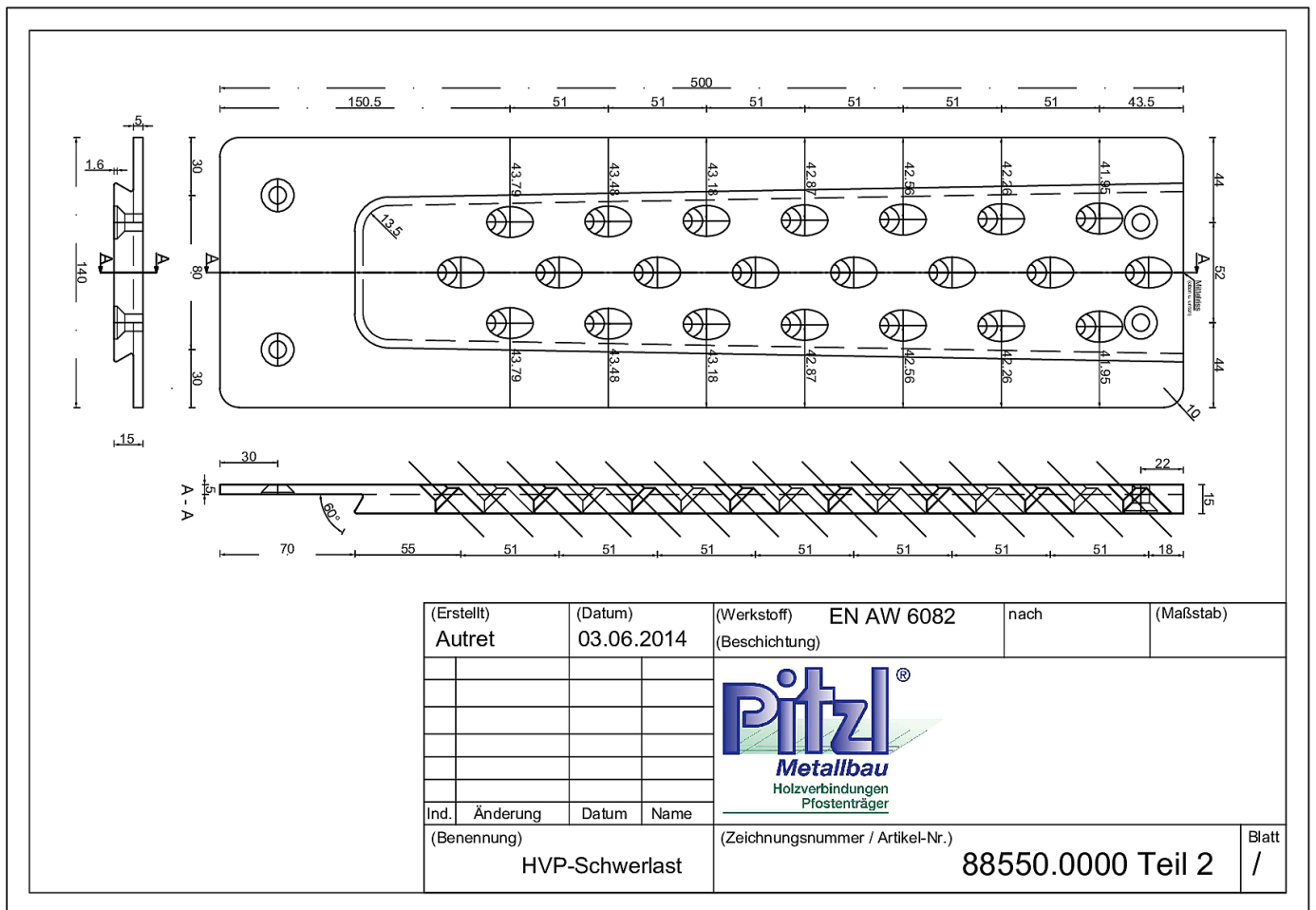
Pitzl Metallbau GmbH & Co.KG
 Siemensstraße 26
 D - 84051 Altheim

Phone: +49 8703 9346-0
 Fax: +49 8703 9346-55
 E-mail: info@pitzl-connectors.com

Product information and
 terms and conditions at
www.pitzl-connectors.com

Connectors Heavy-duty HVP

HVP connector 88550.1000



Pitzl Metallbau GmbH & Co.KG
 Siemensstraße 26
 D - 84051 Altheim

Phone: +49 8703 9346-0
 Fax: +49 8703 9346-55
 E-mail: info@pitzl-connectors.com

Product information and
 terms and conditions at
www.pitzl-connectors.com

Connectors Heavy-duty HVP

HVP connector 88550.1000

Static values

Effective thread length (l_{ef})		Minimal section (mm)		Characteristic load capacity R_k (kN)							
				Solid wood C24 ($\rho_k = 350 \text{ kg/m}^3$)				Glued-laminated timber GL24h ($\rho_k = 385 \text{ kg/m}^3$)			
Screws	l_{ef} (mm)	H	J	$F_{2,Rk}$	$F_{3,Rk}$	$F_{4,Rk}$	$F_{1,Rk}$	$F_{2,Rk}$	$F_{3,Rk}$	$F_{4,Rk}$	$F_{1,Rk}$
$\emptyset 8,0 \times 160$	150	170 x 520	170 x 520	256,28	36,40	83,90	48,32	273,70	36,40	87,43	51,61
$\emptyset 8,0 \times 180$	170	190 x 550	170 x 550	286,83			54,09	306,34			57,76
$\emptyset 8,0 \times 200$	190	210 x 580	170 x 580	317,03			59,78	338,59			63,85

Further static values can be found in our design manual at www.pitzl-connectors.com/en/downloads

Accessories

Item no.	Description
99211.0812	Countersunk screw 8 x 120 mm
99211.0818	Countersunk screw 8 x 180 mm
99211.0820	Countersunk screw 8 x 200 mm
58396.0000	Collet holder
58396.0012	Collet $\emptyset 12 \text{ mm}$
50934.2000	Grooving cutter $\emptyset 20 \text{ mm}$



Pitzl Metallbau GmbH & Co.KG
Siemensstraße 26
D - 84051 Altheim

Phone: +49 8703 9346-0
Fax: +49 8703 9346-55
E-mail: info@pitzl-connectors.com

Product information and
terms and conditions at
www.pitzl-connectors.com