

Connectors

88545.1000

Innovative wood connection systems for highest requirements.



PIRAT Metallbau GmbH & Co. KG
DIN EN 1090-2



Connectors Heavy-duty HVP

HVP connector 88545.1000

The heavy-duty HVP of the series 885 with a width of 140 mm are optimally suitable for wide beams (from 170 mm) under very high loads.

A further quality criterion of the Pitzl HVP connectors series is the anodisation. Beside a smooth-running assembly and a dirty-free surface it provides the Pitzl HVP a very beautiful look.



| | |
|--|-----------------|
| Dimensions w x h x d (mm) | 140 x 450 x 20 |
| Number of screws | 48 |
| Screws size | Ø 8 x 100 - 200 |
| Minimal timber section with screws Ø 8 x 160 (mm) Header | 170 x 470 |
| Joist | 170 x 470 |
| Characteristic load capacity* Ø 8 x 160 | 251,44 |
| Ø 8 x 200 | 311,05 |
| Packing unit | 4 |
| CE | * |

* F_{2,Rk} (kN) for GL24h with fully threaded screws: Ø 8 x 160 with effective thread length of 150 mm and Ø 8 x 200 with effective thread length of 190 mm. For other screws and thread lengths or wood based materials: cf. design manual. Screws up to 200 mm length und the expanded heavy-duty series 885.. enable a high augmentation of the load capacity.



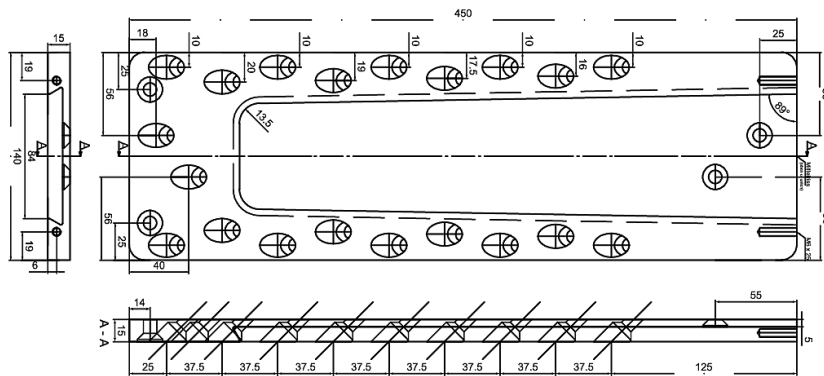
Pitzl Metallbau GmbH & Co.KG
Siemensstraße 26
D - 84051 Altheim


Phone: +49 8703 9346-0
Fax: +49 8703 9346-55
E-mail: info@pitzl-connectors.com

Product information and
terms and conditions at
www.pitzl-connectors.com

Connectors Heavy-duty HVP

HVP connector 88545.1000



| | | | | |
|-------------------------------|-----------------------|--|------|------------|
| (Erstellt) Autret | (Datum) 30.09.2014 | (Werkstoff) EN AW 6082 (Beschichtung) | nach | (Maßstab) |
| Abhebesich. | 30.09.14 |  Pitzl [®] Metallbau Holzverbindungen Pfostenträger | | |
| | | | | |
| | | | | |
| | | | | |
| Ind. | Änderung | Datum | Name | |
| (Benennung) HVP-Schwerlast | | (Zeichnungsnummer / Artikel-Nr.) 88545.0000 Teil 1 | | Blatt / |



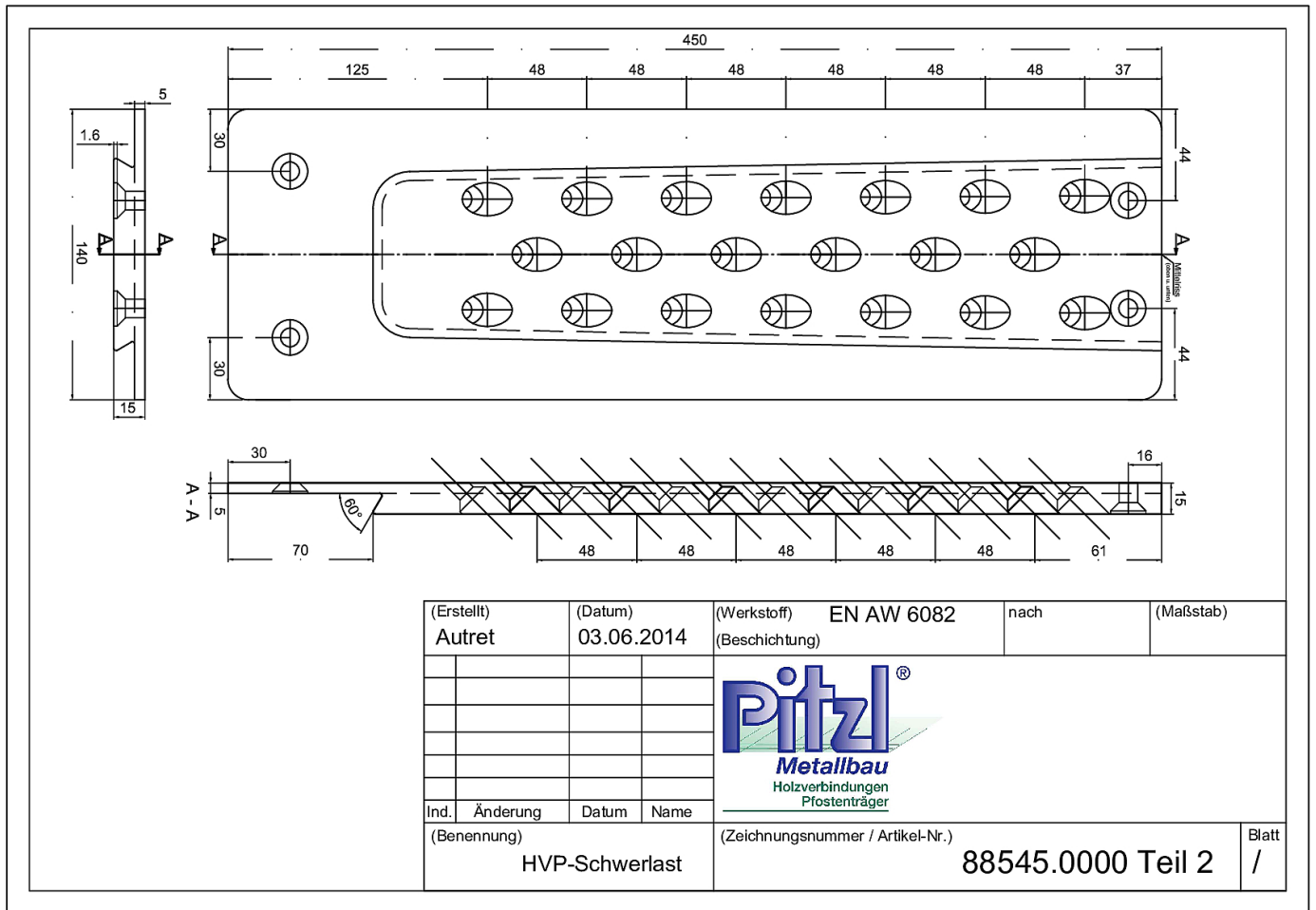
Pitzl Metallbau GmbH & Co.KG
Siemensstraße 26
D - 84051 Altheim

Phone: +49 8703 9346-0
Fax: +49 8703 9346-55
E-mail: info@pitzl-connectors.com

Product information and
terms and conditions at
www.pitzl-connectors.com

Connectors Heavy-duty HVP

HVP connector 88545.1000



Pitzl Metallbau GmbH & Co.KG
Siemensstraße 26
D - 84051 Altheim

Phone: +49 8703 9346-0
Fax: +49 8703 9346-55
E-mail: info@pitzl-connectors.com

Product information and
terms and conditions at
www.pitzl-connectors.com

Connectors Heavy-duty HVP

HVP connector 88545.1000

Static values

| Effective thread length (l_{ef}) | | Minimal section (mm) | | Characteristic load capacity R_k (kN) | | | | | | | |
|--------------------------------------|---------------|----------------------|-----------|--|------------|------------|------------|--|------------|------------|------------|
| | | | | Solid wood C24 ($\rho_k = 350 \text{ kg/m}^3$) | | | | Glued-laminated timber GL24h ($\rho_k = 385 \text{ kg/m}^3$) | | | |
| Screws | l_{ef} (mm) | H | J | $F_{2,Rk}$ | $F_{3,Rk}$ | $F_{4,Rk}$ | $F_{1,Rk}$ | $F_{2,Rk}$ | $F_{3,Rk}$ | $F_{4,Rk}$ | $F_{1,Rk}$ |
| $\emptyset 8,0 \times 160$ | 150 | 170 x 470 | 170 x 470 | 232,98 | 36,40 | 77,45 | 48,32 | 248,82 | 36,40 | 80,70 | 51,61 |
| $\emptyset 8,0 \times 180$ | 170 | 190 x 500 | 170 x 500 | 260,76 | | | 54,09 | 278,49 | | | 57,76 |
| $\emptyset 8,0 \times 200$ | 190 | 210 x 530 | 170 x 530 | 288,21 | | | 59,78 | 307,81 | | | 63,85 |

Further static values can be found in our design manual at www.pitzl-connectors.com/en/downloads

Accessories

| Item no. | Description |
|------------|--|
| 99211.0812 | Countersunk screw 8 x 120 mm |
| 99211.0818 | Countersunk screw 8 x 180 mm |
| 99211.0820 | Countersunk screw 8 x 200 mm |
| 58396.0000 | Collet holder |
| 58396.0012 | Collet $\emptyset 12 \text{ mm}$ |
| 50934.2000 | Grooving cutter $\emptyset 20 \text{ mm}$ |



Pitzl Metallbau GmbH & Co.KG
Siemensstraße 26
D - 84051 Altheim

Phone: +49 8703 9346-0
Fax: +49 8703 9346-55
E-mail: info@pitzl-connectors.com

Product information and
terms and conditions at
www.pitzl-connectors.com