

# Connectors

## 88435.1000

Innovative wood connection systems for highest requirements.



PIST Metallbau GmbH & Co. KG  
DIN EN 1090-2



ZiNiP max protection



## Connectors Heavy-duty HVP

# HVP connector 88435.1000

The new disposed inclined drilled holes as well as the possibility of using different screws lengths guarantee the adaptability to the small timber cross-sections too.



|  |                 |
|--|-----------------|
| Dimensions w x h x d (mm)                                | 120 x 350 x 20  |
| Number of screws   | 28              |
| Screws size  | Ø 8 x 100 - 200 |
| Minimal timber section with screws Ø 8 x 160 (mm) Header | 160 x 370       |
| Joist  | 140 x 370       |
| Characteristic load capacity* Ø 8 x 160                  | 125,72          |
| Ø 8 x 200  | 155,52          |
| Packing unit   | 4               |
| CE   | *               |

\* F2,Rk (kN) for GL24h with fully threaded screws: Ø 8 x 160 with effective thread length of 150 mm and Ø 8 x 200 with effective thread length of 190 mm. For other screws and thread lengths or wood based materials: cf. design manual. Heavy-duty HVP connectors are automatically delivered with uplift protection (2 screws Ø 6 x 20 mm and flat steel for uplift protection included).



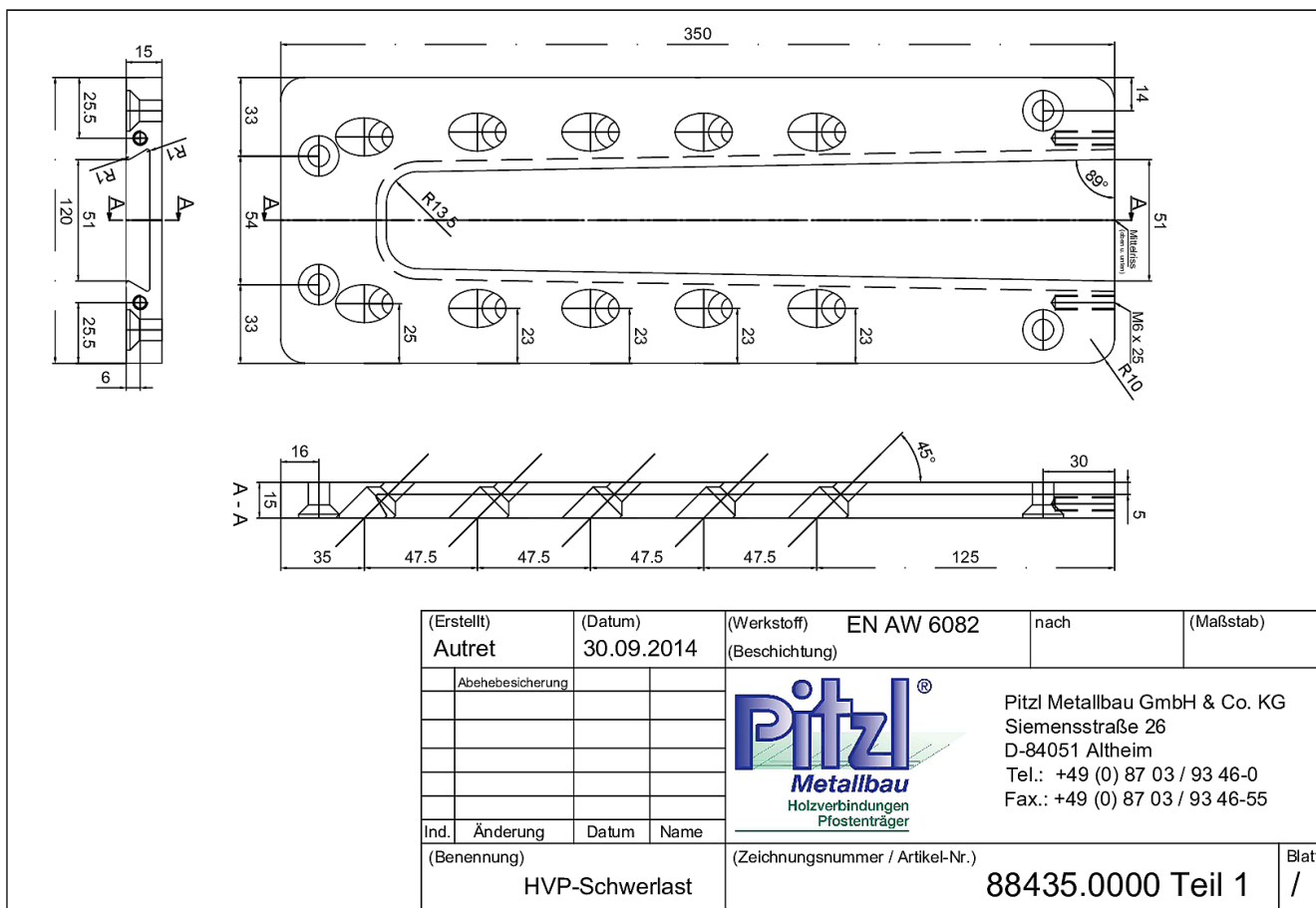
Pitzl Metallbau GmbH & Co.KG  
Siemensstraße 26  
D - 84051 Altheim

Phone: +49 8703 9346-0  
Fax: +49 8703 9346-55  
E-mail: [info@pitzl-connectors.com](mailto:info@pitzl-connectors.com)

Product information and  
terms and conditions at  
[www.pitzl-connectors.com](http://www.pitzl-connectors.com)

# Connectors Heavy-duty HVP

## HVP connector 88435.1000



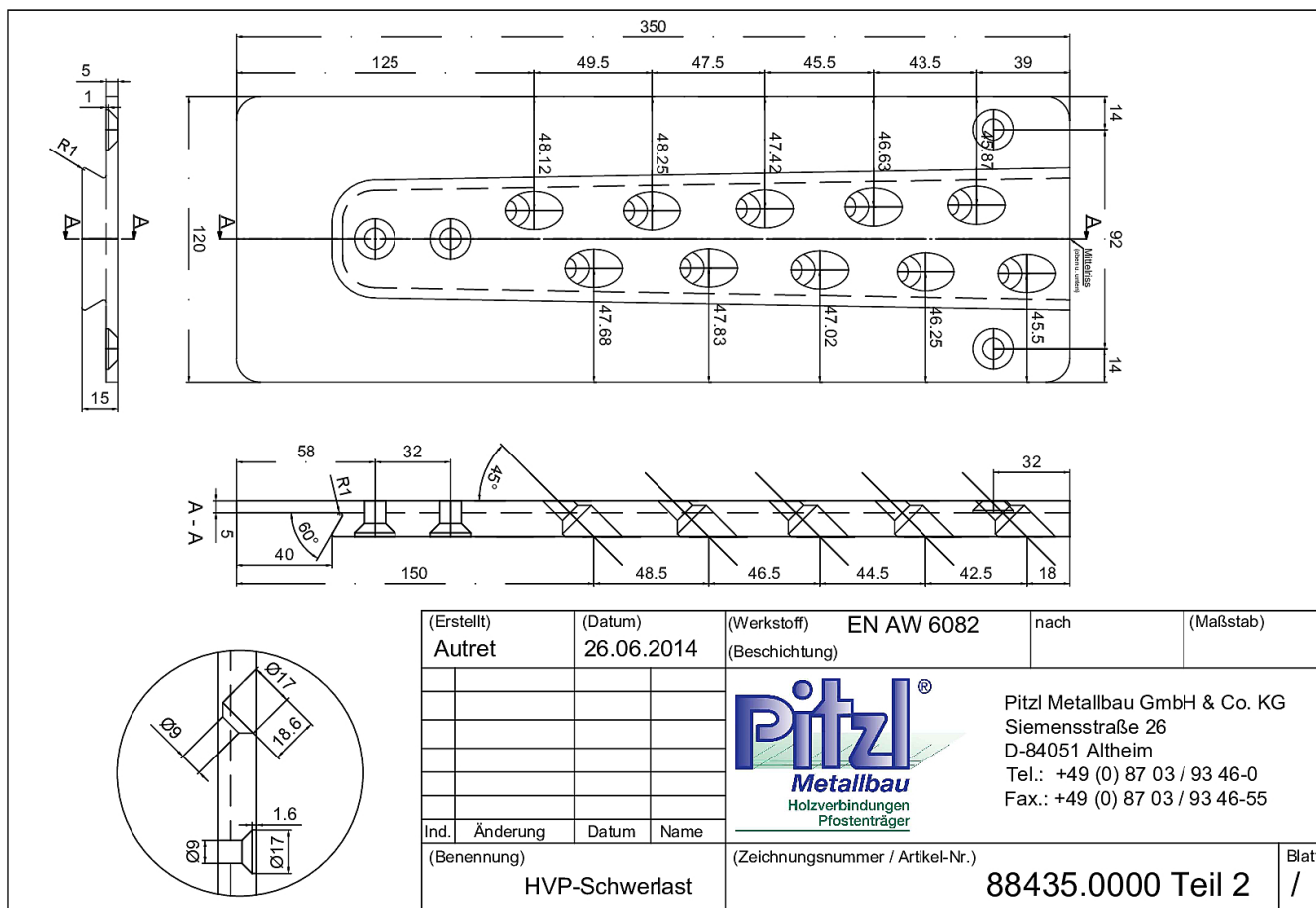
Pitzl Metallbau GmbH & Co.KG  
Siemensstraße 26  
D - 84051 Altheim

Phone: +49 8703 9346-0  
Fax: +49 8703 9346-55  
E-mail: info@pitzl-connectors.com

Product information and  
terms and conditions at  
www.pitzl-connectors.com

# Connectors Heavy-duty HVP

## HVP connector 88435.1000



Pitzl Metallbau GmbH & Co.KG  
Siemensstraße 26  
D - 84051 Altheim

Phone: +49 8703 9346-0  
Fax: +49 8703 9346-55  
E-mail: info@pitzl-connectors.com

Product information and  
terms and conditions at  
www.pitzl-connectors.com

# Connectors Heavy-duty HVP

## HVP connector 88435.1000

### Static values

| Effective thread length ( $\ell_{ef}$ ) |                  | Minimal section (mm) |           | Characteristic load capacity $R_k$ (kN)          |            |            |            |  |            |            |            |
|---|------------------|----------------------|-----------|--|------------|------------|------------|--|------------|------------|------------|
|   |                  |                      |           | Solid wood C24 ( $\rho_k = 350 \text{ kg/m}^3$ ) |            |            |            | Glued-laminated timber GL24h ( $\rho_k = 385 \text{ kg/m}^3$ ) |            |            |            |
| Screws                                  | $\ell_{ef}$ (mm) | H                    | J         | $F_{2,Rk}$                                       | $F_{3,Rk}$ | $F_{4,Rk}$ | $F_{1,Rk}$ | $F_{2,Rk}$   | $F_{3,Rk}$ | $F_{4,Rk}$ | $F_{1,Rk}$ |
| $\emptyset 8,0 \times 160$              | 150              | 160 x 370            | 140 x 370 | 116,49   | 36,40      | 45,18      | 48,32      | 124,41   | 36,40      | 47,08      | 51,61      |
| $\emptyset 8,0 \times 180$              | 170              | 180 x 400            | 140 x 400 | 130,38   |            |            | 54,09      | 139,25   |            |            | 57,76      |
| $\emptyset 8,0 \times 200$              | 190              | 200 x 430            | 140 x 430 | 144,11   |            |            | 59,78      | 153,91   |            |            | 63,85      |

Further static values can be found in our design manual at [www.pitzl-connectors.com/en/downloads](http://www.pitzl-connectors.com/en/downloads)

### Accessories

| Item no.   | Description  |
|------------|--|
| 99211.0812 | Countersunk screw 8 x 120 mm                               |
| 99211.0818 | Countersunk screw 8 x 180 mm                               |
| 99211.0820 | Countersunk screw 8 x 200 mm                               |
| 58400.0000 | Milling and assembly template for connectors 88420 - 88560 |
| 58396.0000 | Collet holder  |
| 58396.0012 | Collet<br>$\emptyset 12 \text{ mm}$                        |
| 50934.2000 | Grooving cutter<br>$\emptyset 20 \text{ mm}$               |



Pitzl Metallbau GmbH & Co.KG  
Siemensstraße 26  
D - 84051 Altheim

Phone: +49 8703 9346-0  
Fax: +49 8703 9346-55  
E-mail: [info@pitzl-connectors.com](mailto:info@pitzl-connectors.com)

Product information and terms and conditions at [www.pitzl-connectors.com](http://www.pitzl-connectors.com)